

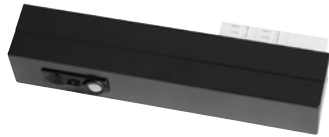
TECHNICAL DATA SHEET

Organic Response G3 sensor incl PSU iTrack Black

FAGERHULT

Art. no: 86428

External track mounted Organic Response G3 sensor incl. DALI PSU



External track mounted Organic Response G3 sensor incl. DALI PSU. For including track mounted spotlights in an Organic Response installation Do not connect external Dali on C1/C2. Max 12 drivers can be connected to one track with this sensor.

Do not connect more than one sensor / track.

TECHNICAL DATA

| | |
|--|---|
| MATERIALS | Plastic: LG LUPOY SR3108FT (WU153) Metal: Zincaeneal 0.60 mm Spring: Music Wire 1.0 mm |
| MOUNTING | Fagerhult iTrack |
| ELECTRICAL SAFETY COMPLIANCE | AS/NZS 61347.2.11:2003 AS/NZS 61347.1:2016 IEC/EN 61347-12-11:2001 IEC/EN 61347-1:2015 |
| EMC COMPLIANCE | EN 55015: 2015 EN 61547: 2009 ETSI EN 301 489-1 V2.1.1 (2017-02) ETSI EN 301 489-17 V2.2.1 (2012-09) ETSI EN 301 489-1 V3.1.1 (2017-02) |
| COMPLIES WITH EC DIRECTIVES | EMC Directive 2014/30/EU Radio Equipment Directive 2014/53/EU RoHS2 Directive 2011/65/EU |
| DIMMING | Logarithmic |
| SENSOR NODE (tc) | 0 °C ... 55 °C |
| NODE TO NODE COMMUNICATION PROTOCOL - CONTROL | Wireless Infrared Organic Response |
| NODE TO NODE COMMUNICATION PROTOCOL - DATA | Wirepas - Wireless RF |
| RF FREQUENCY BAND | 2.4 GHz |
| RF RANGE - NODE TO NODE | 8 m - non LOS (max) |
| DETECTION AREA | 2.7 m installation height - 5 m Ø on floor |
| SENSOR TYPE | PIR |