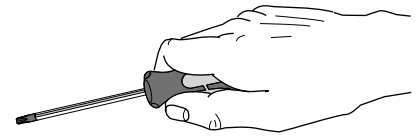
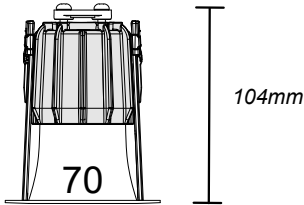


# FAGERHULT

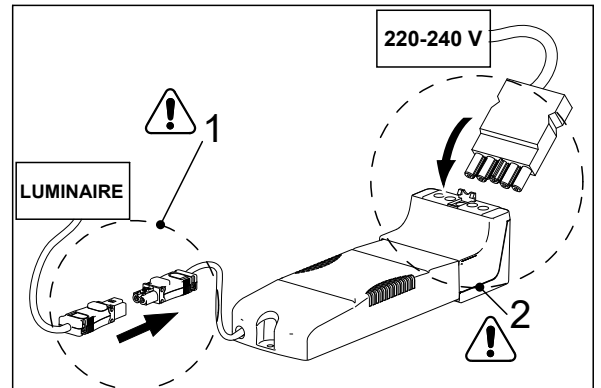
SE - 566 80 Habo



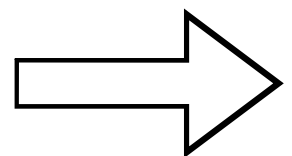
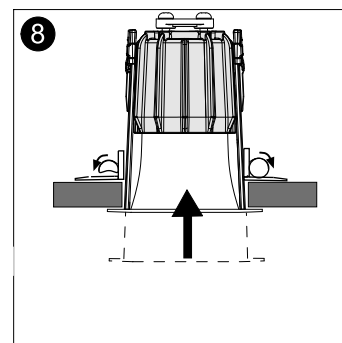
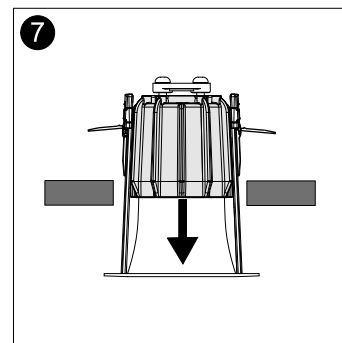
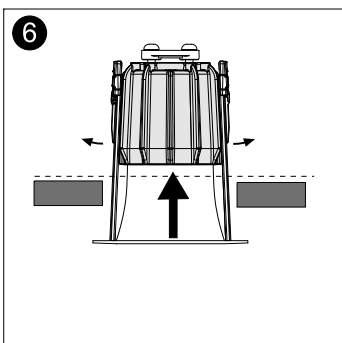
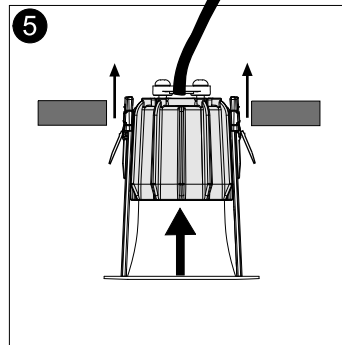
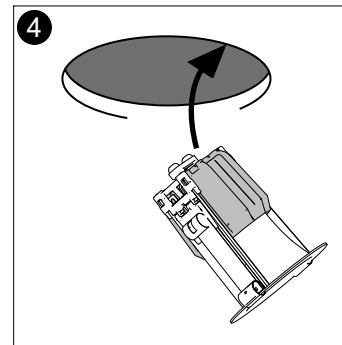
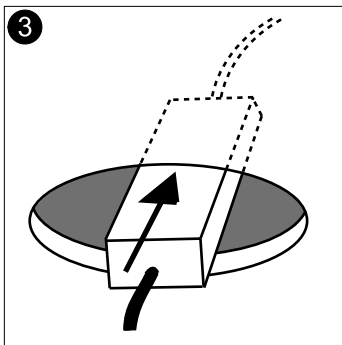
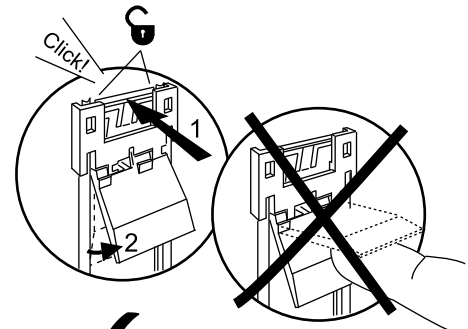
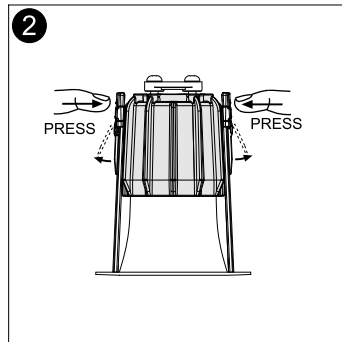
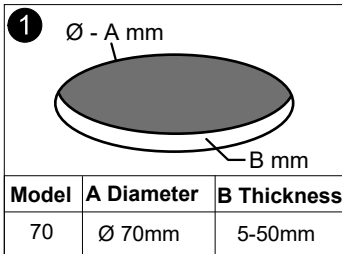
## Pleiad G4 70



- (S)** Ljuskälla och drivdon ska enbart bytas ut av tillverkaren eller dess utsedda person.
- (GB)** The light source and control gear shall only be replaced by the manufacturer or its designated person.



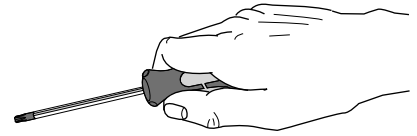
- (S)** Armaturdel MÅSTE anslutas innan nätspänning kopplas in!
- (GB)** The luminaire MUST be connected before plugging in the mains voltage!
- (D)** Die Leuchteile MUSS vor dem Einstecken der Netzspannung angeschlossen werden!



**(S)** Det är lämpligt att denna information överlämnas till användaren av anläggningen.

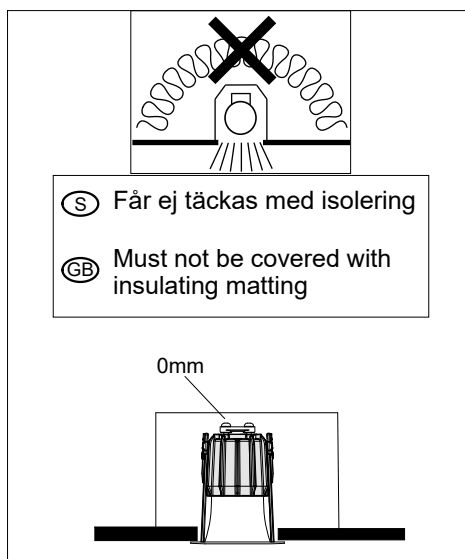
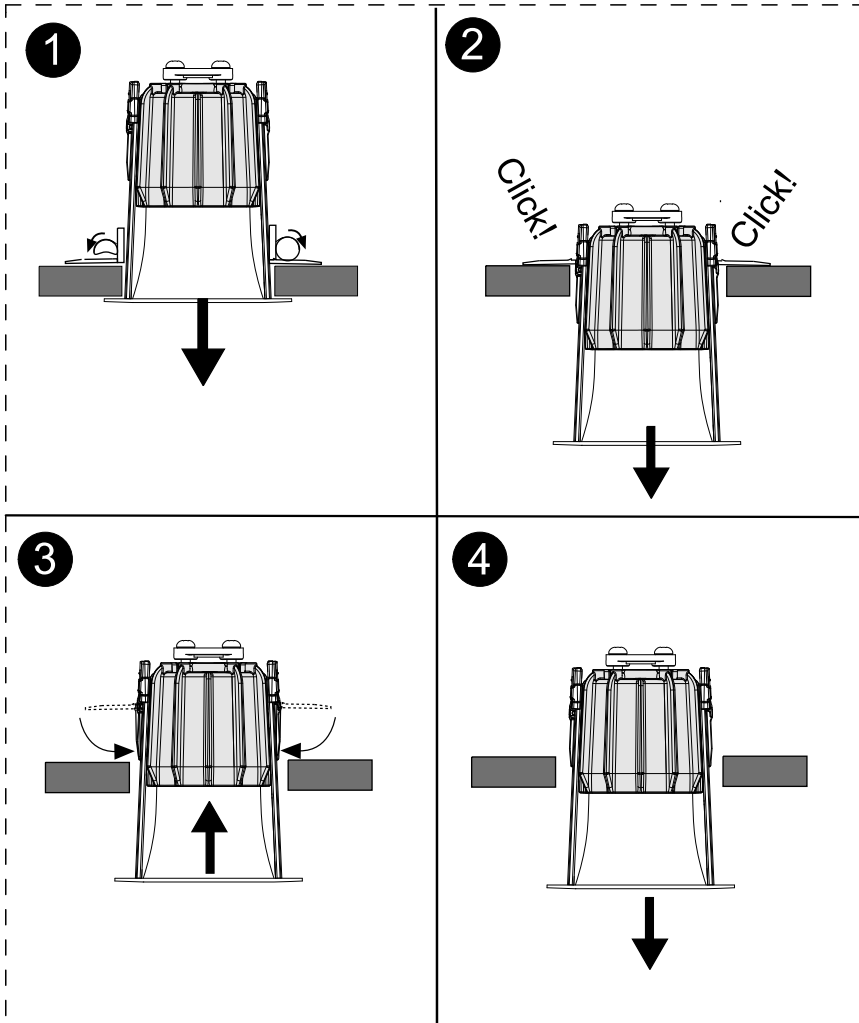
**(GB)** It is appropriate that this information is passed on to the users of the installation.

Manufactured by Fagerhult Sweden.  
For UK market importer Fagerhult UK  
33-34 Dolben Street, London, SE1 0UQ



## Pleiad G4 70

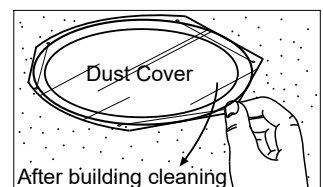
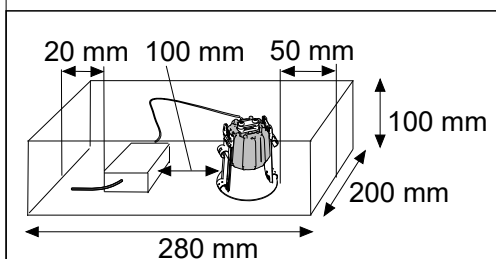
### Remove Procedure



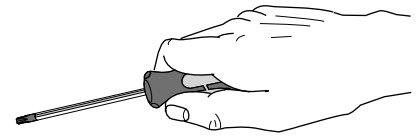
- Ⓢ Om armaturens kabel skulle skadas eller om armaturen inte fungerar som den ska, skall dessa komponenter kontrolleras/bytas av tillverkaren eller av tillverkaren utsedd person
- ⓄB If the luminaire cable is damaged or if the luminaire is not working properly, it shall exclusively be checked/replaced by the manufacturer or by the manufacturer designated person.

- Ⓢ Ljuskälla och drivdon ska enbart bytas ut av tillverkaren eller dess utsedda person.
- ⓄB The light source and control gear shall only be replaced by the manufacturer or its designated person.

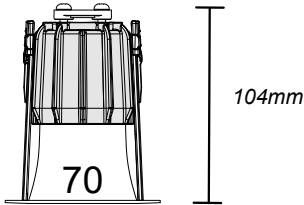
- Ⓢ För montering i ventilerat alternativt oventilerat utrymme.
- ⓄB For mounting in ventilated or unventilated space



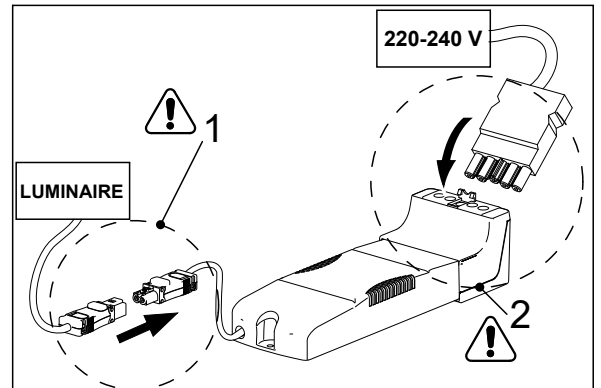
# FAGERHULT SE - 566 80 Habo



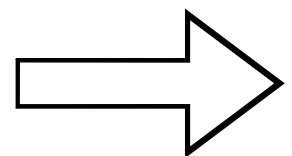
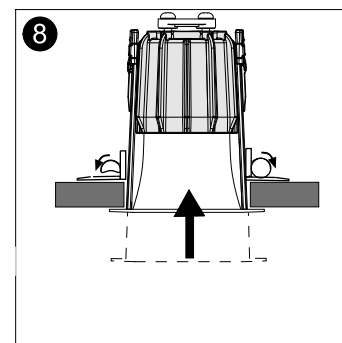
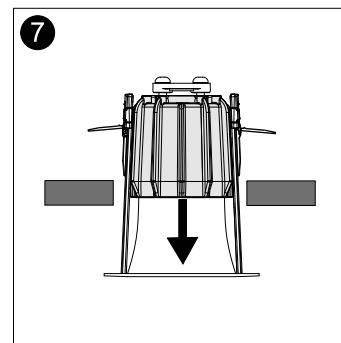
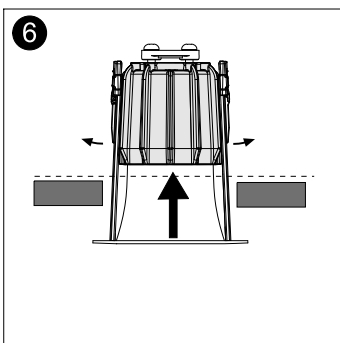
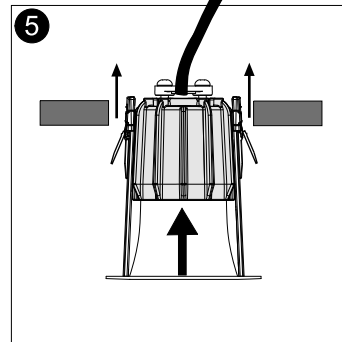
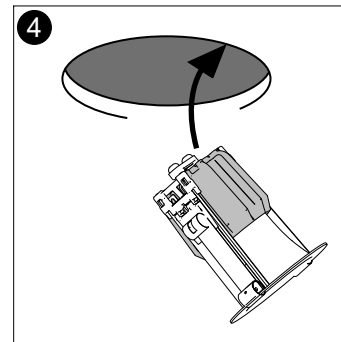
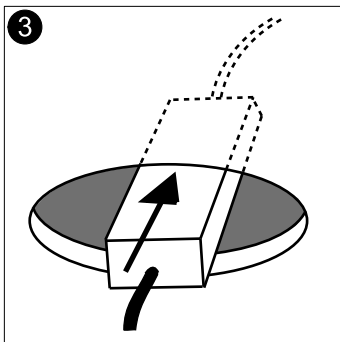
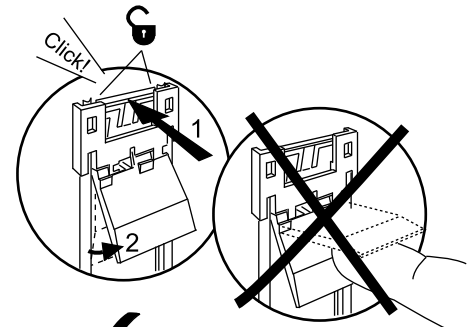
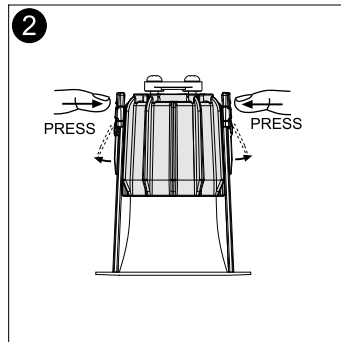
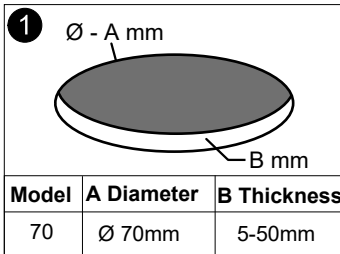
## Pleiad G4 70 Dim to Warm



- (S)** Ljuskälla och drivdon ska enbart bytas ut av tillverkaren eller dess utsedda person.
- (GB)** The light source and control gear shall only be replaced by the manufacturer or its designated person.



- (S)** Armaturdel MÅSTE anslutas innan nätspänning kopplas in!
- (GB)** The luminaire MUST be connected before plugging in the mains voltage!
- (D)** Die Leuchteileil MUSS vor dem Einstecken der Netzspannung angeschlossen werden!



5435813 Utgåva/Edition 03

- (S)** Det är lämpligt att denna information överlämnas till användaren av anläggningen.
- (GB)** It is appropriate that this information is passed on to the users of the installation.

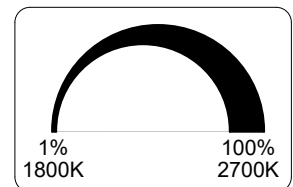
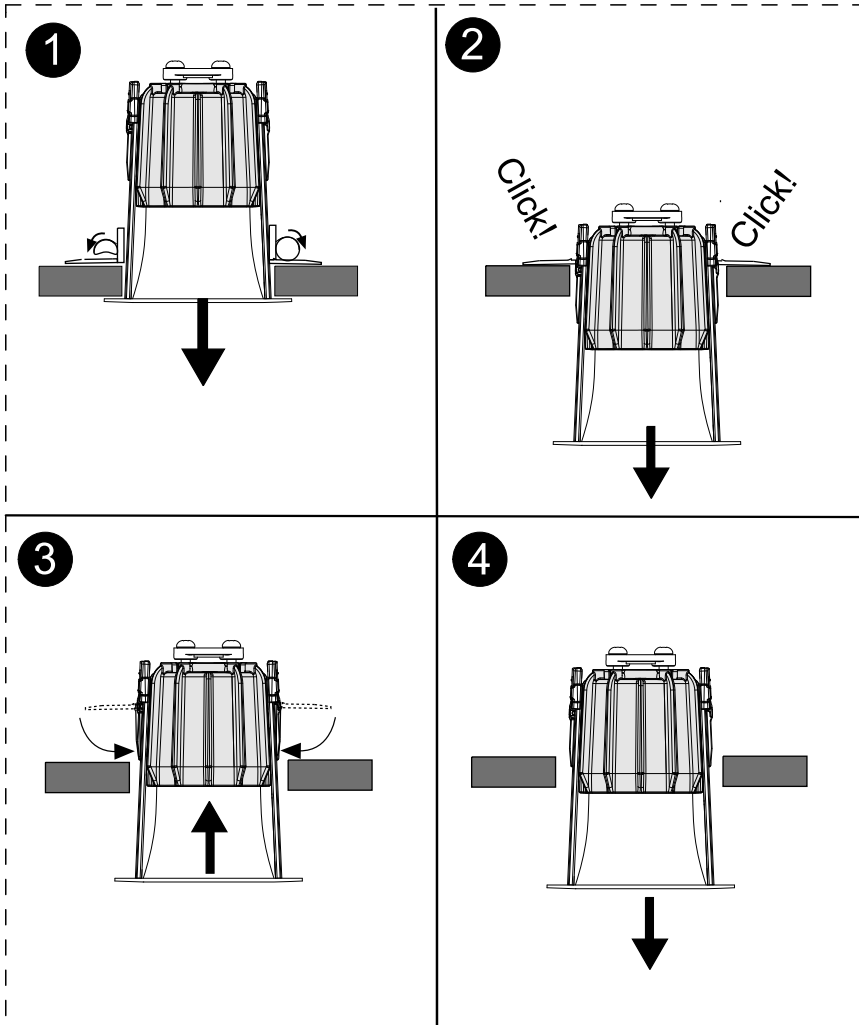
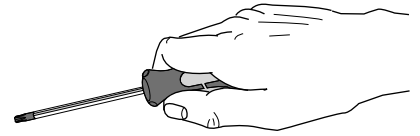
Manufactured by Fagerhult Sweden.  
For UK market importer Fagerhult UK  
33-34 Dolben Street, London, SE1 0UQ

# FAGERHULT

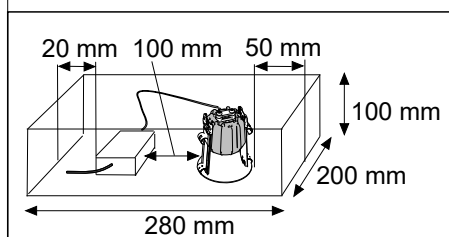
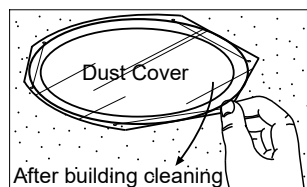
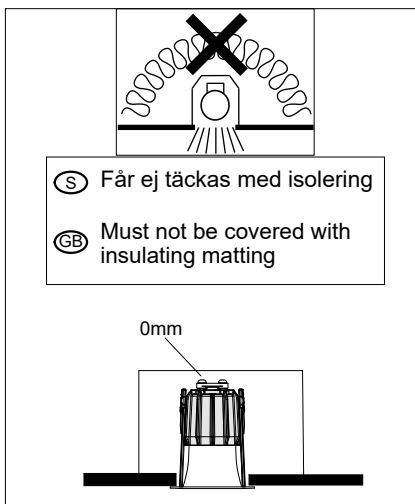
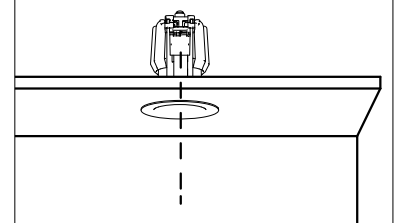
SE - 566 80 Habo

## Pleiad G4 70

### Remove Procedure



Rikta fjädrar mot väggen  
Align the springs towards the wall



**S** För montering i ventilerat alternativt oventilerat utrymme.  
**GB** For mounting in ventilated or unventilated space

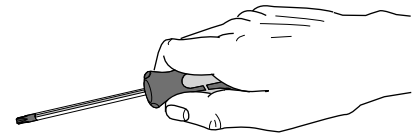
**S** Ljuskälla och drivdon ska enbart bytas ut av tillverkaren eller dess utsedda person.  
**GB** The light source and control gear shall only be replaced by the manufacturer or its designated person.

**S** Om armaturens kabel skulle skadas eller om armaturen inte fungerar som den ska, skall dessa komponenter kontrolleras/bytas av tillverkaren eller av tillverkaren utsedd person  
**GB** If the luminaire cable is damaged or if the luminaire is not working properly, it shall exclusively be checked/replaced by the manufacturer or by the manufacturer designated person.

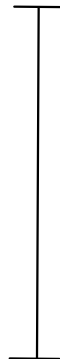
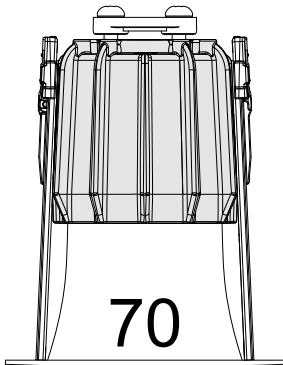


# FAGERHULT

SE - 566 80 Habo



## Pleiad G4 70 Recessed Emergency

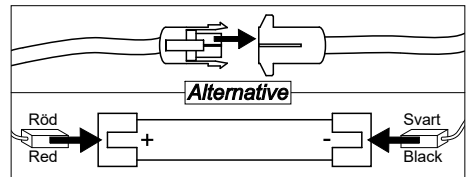
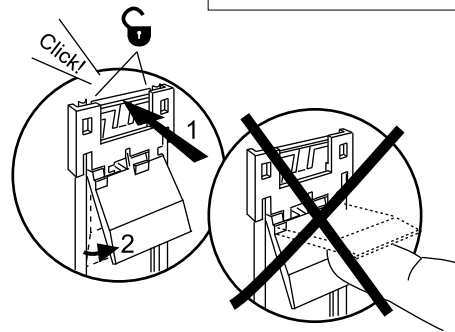
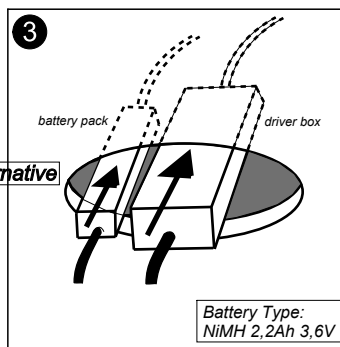
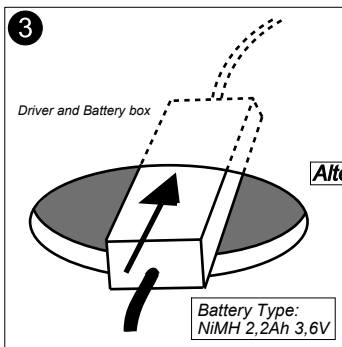
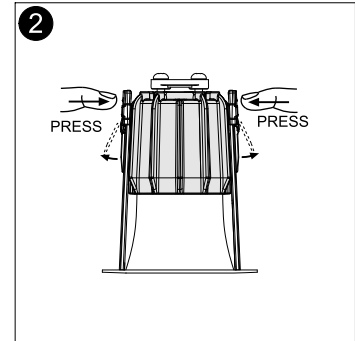


104mm

1 Ø - A mm

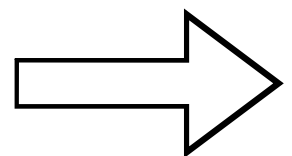
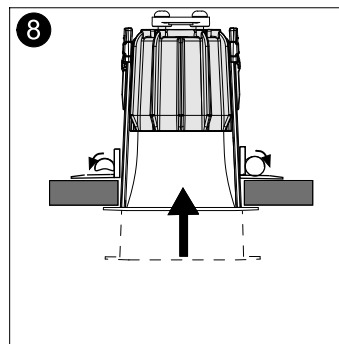
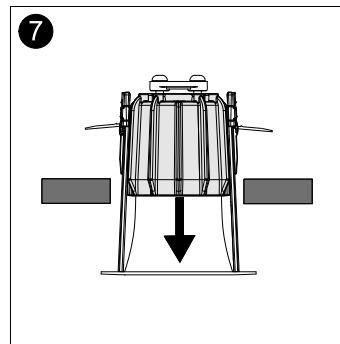
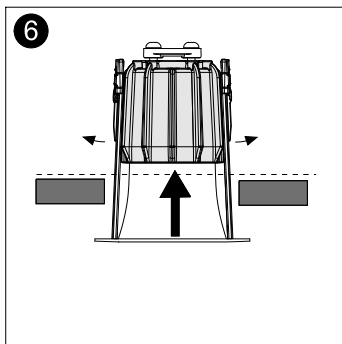
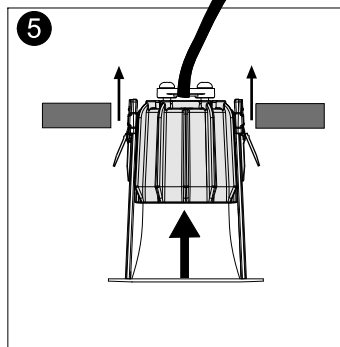
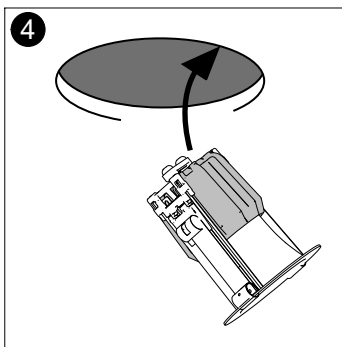
B mm

Model	A Diameter	B Thickness
70	Ø 70mm	5-50mm



⚡ Bryt spänningen före installation och vid batteribyte  
Disconnect luminaire before installation and replacing battery

Anslut batteriet innan spänningen kopplas på.  
Connect battery before switching on the main supply



5459178 Utgåva/Edition 02

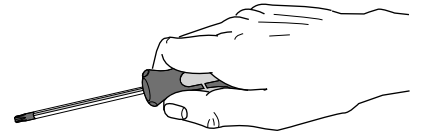
**S** Det är lämpligt att denna information överlämnas till användaren av anläggningen.

**GB** It is appropriate that this information is passed on to the users of the installation.

Manufactured by Fagerhult Sweden.  
For UK market importer Fagerhult UK  
33-34 Dolben Street, London, SE1 0UQ

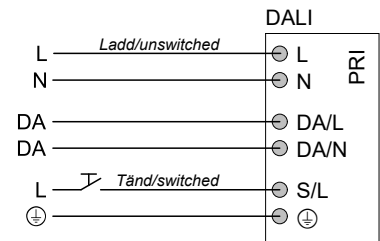
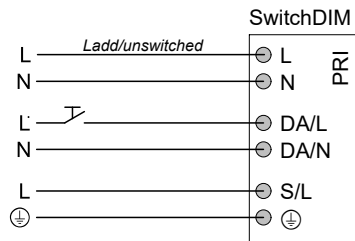
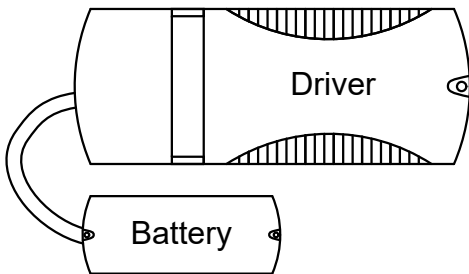
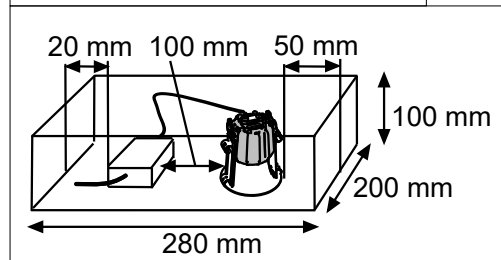
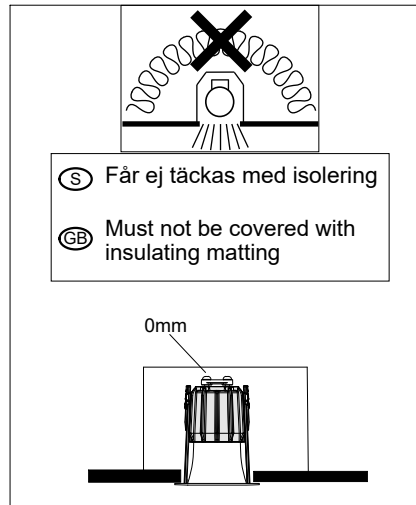
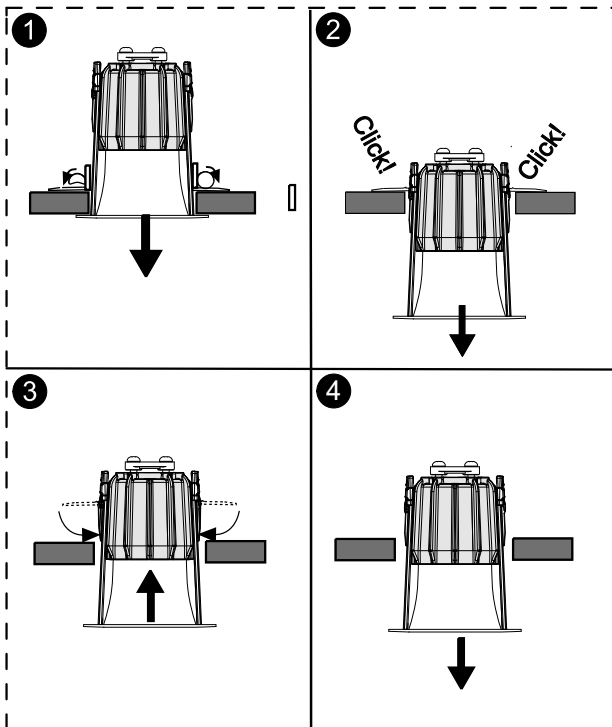
# FAGERHULT

SE - 566 80 Habo



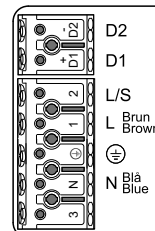
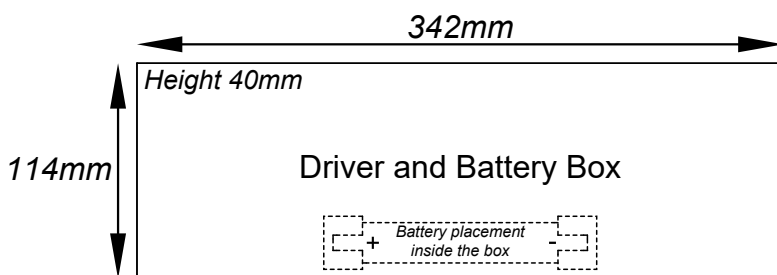
## Pleiad G4 70 Recessed Emergency

### Removal Procedure

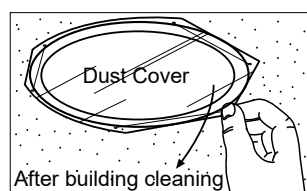


In switchDIM operation the emergency unit will work as SELFTEST unit. All functions and duration tests will perform automatically.

If the optional mains switch is not used connect S/L to L.



(S) Grundläggande isolering mellan nät och styr ledning.  
(GB) Basic insulation between mains and control wiring.



(S) Ljuskälla och drivdon ska enbart bytas ut av tillverkaren eller dess utsedd person.  
(GB) The light source and control gear shall only be replaced by the manufacturer or its designated person.

(S) För montering i ventilerat alternativt ventilerat utrymme.  
(GB) For mounting in ventilated or unventilated space

(S) Om armaturens kabel skulle skadas eller om armaturen inte fungerar som den ska, skall dessa komponenter kontrolleras/bytas av tillverkaren eller av tillverkaren utsedd person  
(GB) If the luminaire cable is damaged or if the luminaire is not working properly, it shall exclusively be checked/replaced by the manufacturer or by the manufacturer designated person.